

SECTION 18, T.7N., R.1E., S.L.B. & M.

IN WEBER COUNTY
SCALE 1" = 200'

TAXING UNIT: 36

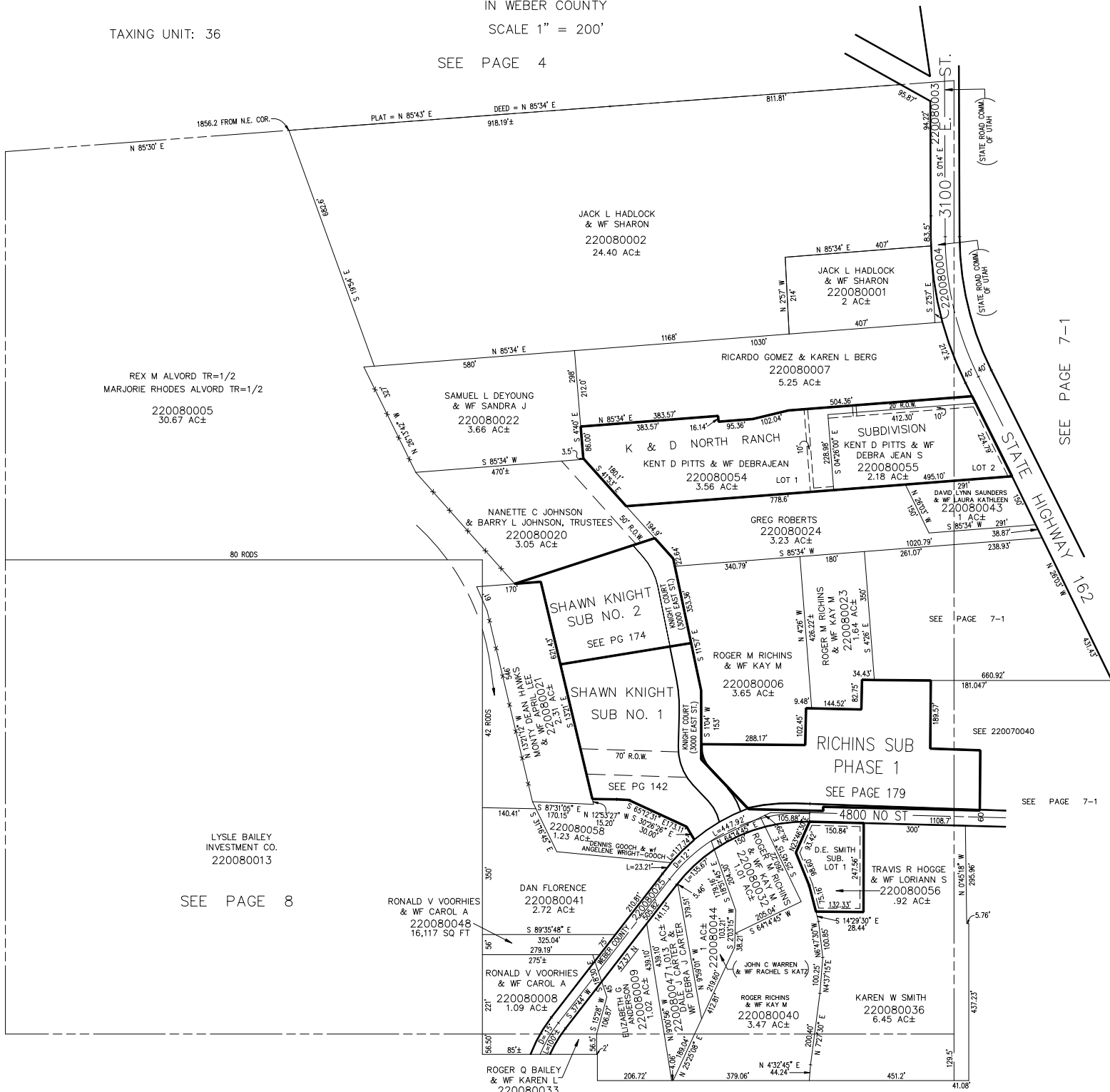
SEE PAGE 4

SEE PAGE 8

SEE PAGE 7-1

SEE PAGE 7-1

SEE PAGE 8-2



REX M ALVORD TR=1/2
MARJORIE RHODES ALVORD TR=1/2
220080005
30.67 AC±

JACK L HADLOCK
& WF SHARON
220080002
24.40 AC±

SAMUEL L DEYOUNG
& WF SANDRA J
220080022
3.66 AC±

RICARDO GOMEZ & KAREN L BERG
220080007
5.25 AC±

KENT D PITTS & WF DEBRAJEAN
220080054
3.56 AC±

NANETTE C JOHNSON
& BARRY L JOHNSON, TRUSTEES
220080020
3.05 AC±

GREG ROBERTS
220080024
3.23 AC±

SHAWN KNIGHT
SUB NO. 2
SEE PG 174

SHAWN KNIGHT
SUB NO. 1
SEE PG 142

ROGER M RICHINS
& WF KAY M
220080006
3.65 AC±

RICHINS SUB
PHASE 1
SEE PAGE 179

LYSLE BAILEY
INVESTMENT CO.
220080013

SEE PAGE 8

RONALD V VOORHIES
& WF CAROL A
220080048
16,117 SQ FT

DAN FLORENCE
220080041
2.72 AC±

RONALD V VOORHIES
& WF CAROL A
220080008
1.09 AC±

ROGER Q BAILEY
& WF KAREN L
220080033

JOHN C WARREN
& WF RACHEL S KATZ
220080040
3.47 AC±

KAREN W SMITH
220080036
6.45 AC±

TRAVIS R HOGGE
& WF LORIANN
220080056
.92 AC±

D.E. SMITH
220080052
1.00 AC±

ANGELINE WRIGHT-GOOCH
& DENNIS GOOCH
220080055
1.23 AC±

ELIZABETH G
ANDERSON
220080009
1.02 AC±

ROGER RICHINS
& WF KAY M
220080040
3.47 AC±

ROGER RICHINS
& WF KAY M
220080040
3.47 AC±

ROGER RICHINS
& WF KAY M
220080040
3.47 AC±

ROGER RICHINS
& WF KAY M
220080040
3.47 AC±

ROGER RICHINS
& WF KAY M
220080040
3.47 AC±